

Where do I fit?

Fall Application:

An overview of MNPS
school options for
2012-2013



Finding
Where
You
Fit

For our Families

🧩 **Evaluated** the Lottery Process to see where we could improve

🧩 **Outcomes:**

- We are making the process easier for parents to understand
- We hope to help parents select the school that best fits the needs and wants of the student and the family



Finding
Where
You
Fit

What's New

 Changed the name from Lottery to **Fall Application**



Why?

🧩 We have so many options to families now available that we didn't have years ago, many of those opportunities do not use the **Lottery Process**. There are many ways and options to apply to schools during the Fall. The **Fall Application period** is a time where families can apply to ALL of the options available during the Fall. Easy to understand, Easy to apply!



Finding
Where
You
Fit

Fall Application Period

Same time period:

- Applications Available: Monday, November 7
- Application Deadline: Friday, December 2 at 5:30 p.m.
- Fall Selection Day: Saturday, January 7th



Where do I fit?

Overview of different school-based opportunities that MNPS offers.

Must apply by **December 2** for the 2012-2013 School Year.

- 🧩 How do I choose?
- 🧩 What are my options?
- 🧩 How do I apply?



Finding
Where
You
Fit

We all WANT Options

- ❦ We all want what is best for us as individuals
 - We choose things based on our individual needs and wants.
- ❦ How do you choose your car?
 - How many are in your household, what style you prefer, is the color important to you, how much will you be driving it, how much can you afford



Finding
Where
You
Fit

We **NEED** school options

- 🧩 All children learn differently and have different needs and wants: So we need options!
- 🧩 At MNPS, there are plenty in our Fall Application Period (our focus today)



Decisions, Decisions

🧩 How do I choose? Where do I fit?

- By your child's needs and wants
- Accessibility
- Child's learning style
- Child's personality



What Does My Child Need and Want?

🧩 **Take a moment to think about your child:**


- What does he/she like?
- What does he/she excel in?
- What makes him/her unique?
- What motivates him/her?



What are my options?

 **Zone**

 **Other Opportunities:**

 **Fall Application** – (focus for today)



You're in the Zone

- ❦ All families have a zone school they are assigned to based on where you live.
- ❦ You are automatically enrolled in your zone school when when you register with MNPS.
- ❦ Zone Finder at www.MNPS.org will give your you zone school, GPZ option, and cluster priority.



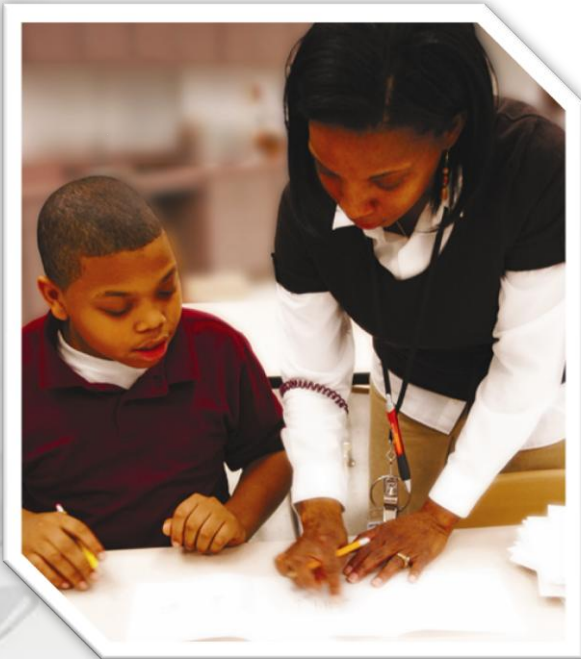
To Zone or Not to Zone, that is the question..

Is my zone school the best choice?

- Does my child enjoy being around other neighborhood children?
- Do I rely on the school bus?
- Do I enjoy and support my neighborhood?



Maybe my child fits in a school with academic requirements...



- 🧩 Does your child excel academically?
- 🧩 Did your child score proficient or advanced on the TCAP test?



Some options to consider based on
how your child **learns**





My child
prefers
hands-on
learning...



My child Loves Science..



Finding
Where
You
Fit



My Child Excels at Music/Arts



Finding
Where
You
Fit

My child wants
a global
education...





My child can
only attend
before or after
regular school
hours...



Finding
Where
You
Fit

My Child
Learns best
from others..



Finding
Where
You
Fit



My Child
learns at
a
different
pace.....



Finding
Where
You
Fit

**My child may not learn differently, but
would like to look at other
schools.....**



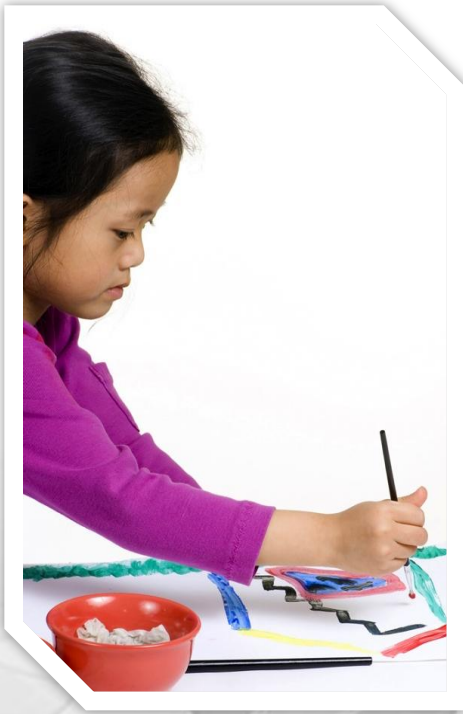
Maybe my child *prefers* a school where.....



- 🧩 my entire family graduated
- 🧩 I heard great things about it
- 🧩 I like the neighborhood
- 🧩 I just “fit” there better

Finding
Where
You
Fit

Recap...



- I know my child's needs/wants
- I know my child's learning style
- I know my child's TCAP scores
- I know what my child excel's in
- I know what makes my child unique
- I know what motives my child
- I know how my child can get to school

Finding
Where
You
Fit

Maybe my child has a different style of learning..

Everyone learns differently.

If we find where we fit, we will get the most out of our education.





METROPOLITAN
Nashville
PUBLIC SCHOOLS

www.mnps.org | 615.259.4636

What's Next?



Opening the Doors to
Your Child's Future

Improvements To The Application Process

 METROPOLITAN
Nashville
PUBLIC SCHOOLS
www.mnps.org | 615.259.4636

Opening the Doors to
Your Child's Future

What's New?

1. The Fall Application is now available online with the exception of magnet schools with academic or entrance requirements and speciality schools. However, all pathway continuation applications are available online

2. Enhanced online technical tools to assist with GPZ and cluster priorities

3. Using the online process to indicate which schools you visited prior to making your selections


4. Extended wait list from 3 days to 5 days

Available Schools

How many schools will be offered during the Fall Application Period?



METROPOLITAN
Nashville
PUBLIC SCHOOLS
www.mnps.org | 615.259.4636



Opening the Doors to
Your Child's Future

Available Schools

MNPS will offer 31 schools in the Fall Application Period, which includes 6 new MSAP grant funded schools.



Opening the Doors to
Your Child's Future

Schools Offered during the Fall Application Period

Elementary Schools

- Caldwell
- Carter Lawrence
- Robert Churchwell
- Hattie Cotton
- Eakin
- Fall Hamilton
- Glendale
- Hull Jackson Montessori
- Andrew Jackson
- Jones
- Lockeland
- Stanford Montessori
- Sylvan Park

Middle Schools

- Bailey
- I.T. Creswell
- Croft
- John Early
- East Literature
- Haynes
- Head
- Martin Luther King
- Meigs
- Rose Park
- West End

High Schools

- East Literature
- Hillsboro
- Hume Fogg
- Martin Luther King
- Nashville Big Picture
- Nashville Middle College
- Nashville School of Arts
- Pearl-Cohn
- Stratford



Opening the Doors to
Your Child's Future

The Application Process

 METROPOLITAN
Nashville
PUBLIC SCHOOLS
www.mnps.org | 615.259.4636

Opening the Doors to
Your Child's Future

The Application Process

Now that I have visited all my school choice selections, how do I apply for the schools that will best fit my child's needs ?

 METROPOLITAN
Nashville
PUBLIC SCHOOLS
www.mnps.org | 615.259.4636

Opening the Doors to
Your Child's Future

The Application Process

Parents will be able to apply one of three ways:

1. On the MNPS website using the new online application tool.
2. Come to the MNPS Customer Service Kiosk Center to apply online.
3. Complete the paper application and submit back to the MNPS Customer Service Center



Opening the Doors to
Your Child's Future

The Application Process

If my child is in a
pathway
continuation feeder
school, do I still
need to apply online
or in writing using a
paper application
form?



Opening the Doors to
Your Child's Future

The Application Process

YES!

Using the pathway continuation application form, that is available online or through the MNPS Customer Service Center.

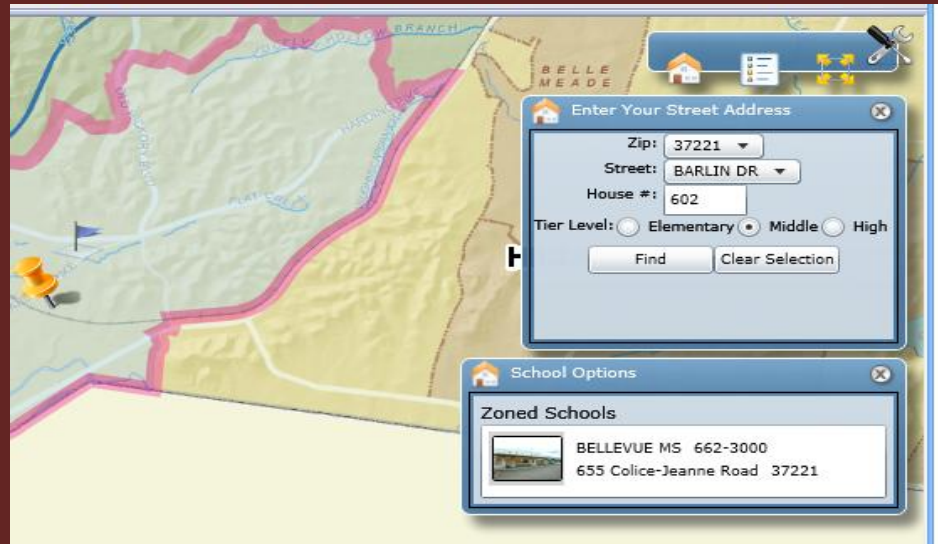
NOT the lottery application form, that is also available online or at our MNPS Customer Service Center.



Opening the Doors to
Your Child's Future

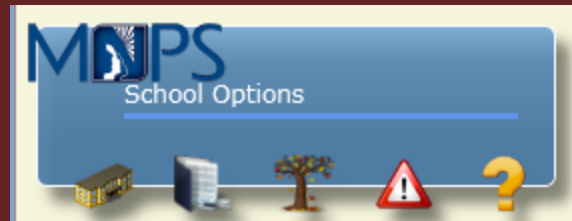
The Application Process

The new application process available online has new **CUSTOM MAPPING CAPABILITIES** to show school options based on the student's home address and through our zone finder tool, that now indicates GPZ and cluster priority schools.



The Application Process

When can I apply and what is needed before I can apply?




Opening the Doors to
Your Child's Future

The Application Process

1. The application process will **kick-off** on **Monday, November 7, 2011**.
2. You will need your child's school student ID number that begins with 190.



METROPOLITAN
Nashville
PUBLIC SCHOOLS
www.mnps.org | 615.259.4636



Opening the Doors to
Your Child's Future

The Application Process

What date is the deadline for accepting all applications?



METROPOLITAN
Nashville
PUBLIC SCHOOLS

www.mnps.org | 615.259.4636

Opening the Doors to
Your Child's Future

The Application Process

All *Completed*
applications

must be in by
5:30 p.m. on
Friday,

December 2, 2011.

 METROPOLITAN
Nashville
PUBLIC SCHOOLS
www.mnps.org | 615.259.4636

Opening the Doors to
Your Child's Future

Fall Application Timeframe

When will I be notified in writing that my child has been accepted in the school of choice?

 METROPOLITAN
Nashville
PUBLIC SCHOOLS
www.mnps.org | 615.259.4636

Opening the Doors to
Your Child's Future

Fall Application Timeframe

On January 7, 2012 at the Martin Professional Development Center you can join the MNPS Fall Application Team at 9:00 am for the Selection Day festivities.

If you cannot attend official notification will be mailed on January 18, 2012.




Opening the Doors to
Your Child's Future

The Application Process

What other important dates do I need to know?



METROPOLITAN
Nashville
PUBLIC SCHOOLS
www.mnps.org | 615.259.4636



Opening the Doors to
Your Child's Future

The Application Process

November 8, 15, & 29, 2011- Walk through Tuesdays prior to submitting the application

January 3, 2012 – Fall application selection cards will be mailed.

January 7, 2012 – The Fall School Selection Day process will take place at Martin Professional Development Center at 9:00 am.

January 10, 17, & 24, 2012 – Walk through Tuesdays prior to accepting school choices offered.

January 18, 2012 – Acceptance and wait list letters will be mailed.

February 3, 2012 – Acceptance letters *MUST* be returned to the by 5:30 pm to the OFFICE OF SCHOOL OPTIONS located at 2601 Bransford Ave.

 METROPOLITAN
Nashville
PUBLIC SCHOOLS
www.mnps.org | 615.259.4636

Opening the Doors to
Your Child's Future

The Application Process

We want families to make informed choices

When families rely on their neighbor's advice....they end up at the perfect school for their neighbor's child.



Please visit on

***Walk-Through
Tuesdays**

or

***Call and schedule
a tour**

**Opening the Doors to
Your Child's Future**

The Application Process

Still Have Questions?

Join us on the following dates below.

1. **Fall Application Kick-Off Event**

Monday, November 7 from 5-7
IT Creswell Middle Arts Magnet

2. **Museum Showcase:**

Thursday, November 3

3. **Entertainment Showcase:**

Thursday, November 10

4. **STEM Showcase:**

Thursday, November 17

5. **Fall Selection Day:**

Saturday, January 7
Martin Professional Development Center



Please join us
Monday, November 7,
from 5 to 7 p.m., to:

Celebrate our school choices

Meet with representatives from
various schools

Learn about the new ONLINE
Fall Application process

Apply for your desired schools

Opening the Doors
to Your Child's Future

METRO NASHVILLE PUBLIC SCHOOLS INVITES YOU

Our goal is to help you find the
best fit for your child so he or
she is prepared for college,
career and life. We look
forward to seeing you!

Opening the Doors to
Your Child's Future